

DPU440-04 SPECIFICATIONS

MAXIMUM OPERATING PRESSURE	3000 PSI / 207 BAR
MAXIMUM DIESEL ENGINE OUTPUT	75 HP
MAXIMUM HYDRAULIC FLOW	60 GPM / 227 LPM
HYDRAULIC RESERVOIR CAPACITY	130 GALLON / 492L
FUEL TANK CAPACITY	35 GALLON / 132L
STARTER TYPE	ELECTRIC
OIL REQUIREMENT	AW-68
SPECIAL FEATURES	VARIABLE DISPLACEMENT PUMP
	HIGH PRESSURE FILTER
	COOLER

REVISIONS

REVISION	ECO NUMBER	ECO DESCRIPTION	ECO COMPLETED BY	ECO COMPLETED DATE
A	16-0020	CREATED DRAWING. ADDED BOM.	JK	1/26/2016
B	17-0101	ADD (1) 1371-A, (1) 1STRAINER, (2) ASR115-6-5, (1) AHTT-250 & HOSES; ADD GA SPECIFICATION SHEET; REPLACE 7040HL-011-01 W/ 7040HL-011-04	M.BUDDEN	4/25/2017

UNLESS OTHERWISE SPECIFIED:
 1. DIMENSIONS ARE IN INCHES
 2. TOLERANCES:
 ANGULAR ± .1°
 FRACTIONAL ± 1/16
 TWO PLACE DECIMAL ± 0.02
 THREE PLACE DECIMAL ± 0.005
 3. IDENTIFY P/N & MAIL P.O. USING 1/8 TO 1/4 ETCHED LETTERS; DENOTED BY "X"
 4. REMOVE BURRS & SHARP EDGES WITH 1/64x45° MAX
 5. MACHINED FILET RADII SHALL BE 1/32
 6. FINAL SURFACE ROUGHNESS AVG. (Ra) SHALL BE ≤ 250 MICROINCHES
 7. ○ DENOTES CRITICAL DIMENSION; 100% INSPECTION REQUIRED
 8. A TRIANGLE DENOTES A REVISION
 9. INTERPRET DRAWING PER ASME Y14.5-2009

PROPRIETARY STATEMENT
 THIS DOCUMENT IS THE PROPERTY OF MCCOY CORPORATION AND IS CONSIDERED CONFIDENTIAL. THIS INFORMATION MAY NOT BE USED, DISCLOSED, COPIED, OR REPRODUCED IN ANY FORM, WITHOUT THE EXPRESS WRITTEN CONSENT OF MCCOY CORPORATION.

DRAWN	J.KELLY	01/26/2016
CHECKED	M.BUDDEN	
APPROVED	M.BUDDEN	

THIRD ANGLE PROJECTION

WEIGHT 4168.4 LBS.

DESCRIPTION

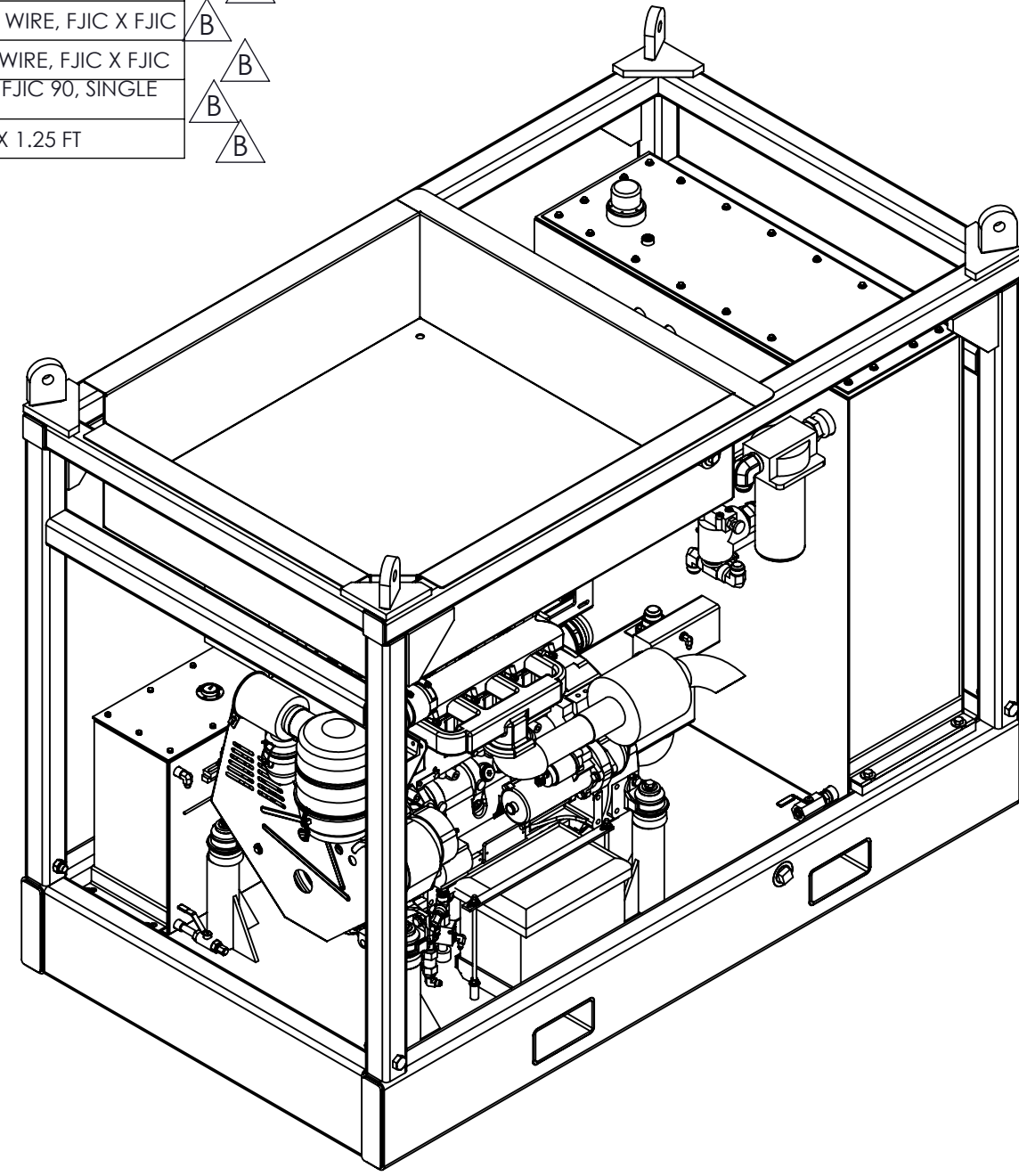
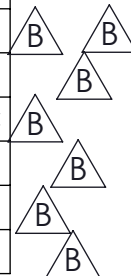
 ASSEMBLY, POWER UNIT, DIESEL, 4 CYLINDER, ELECTRIC START, WITH VARIABLE DISPLACEMENT PUMP, COOLER

SIZE PART NO. B DPU440-04 REV B

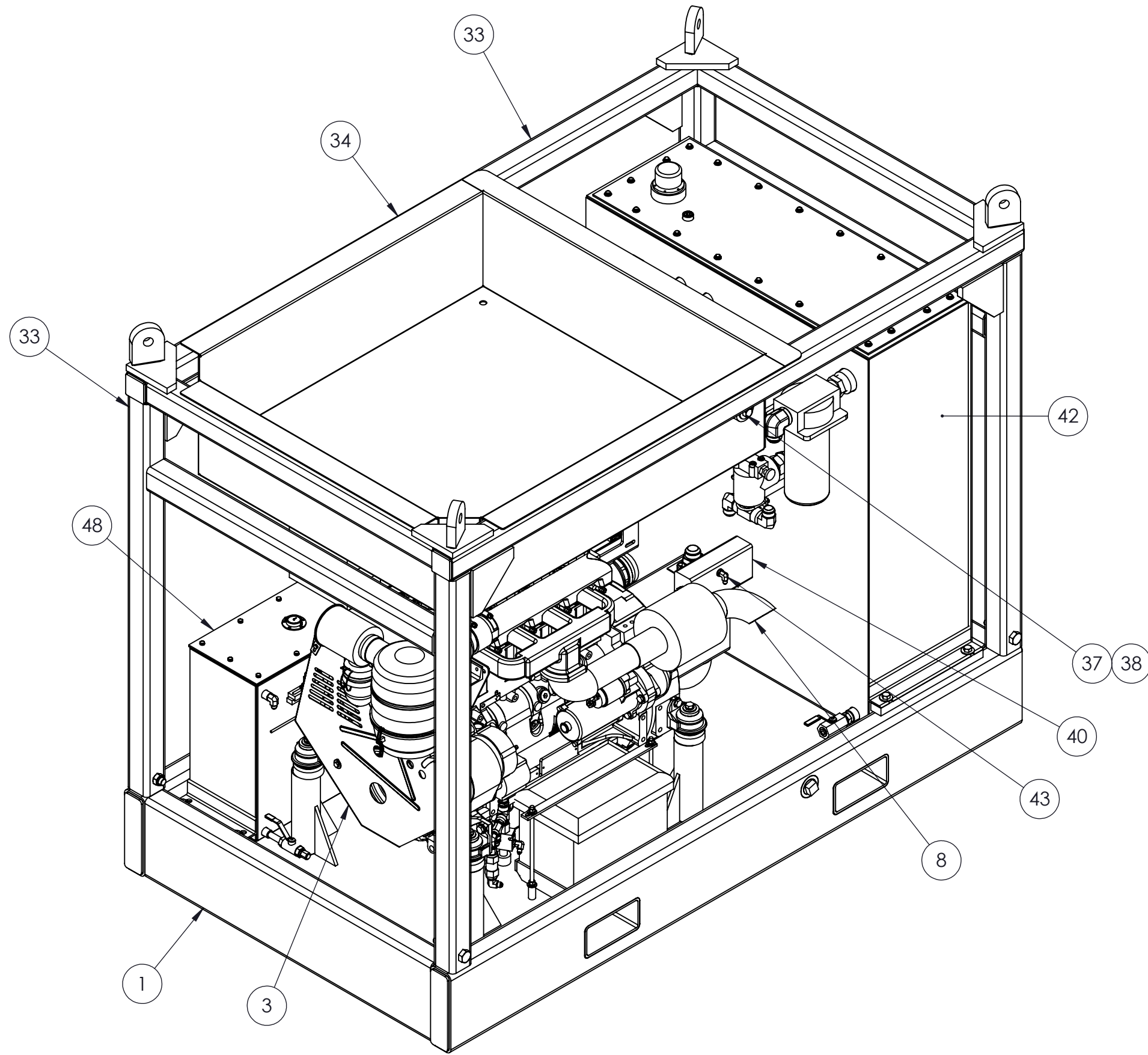
MATERIAL N/A

RELEASED FOR PRODUCTION

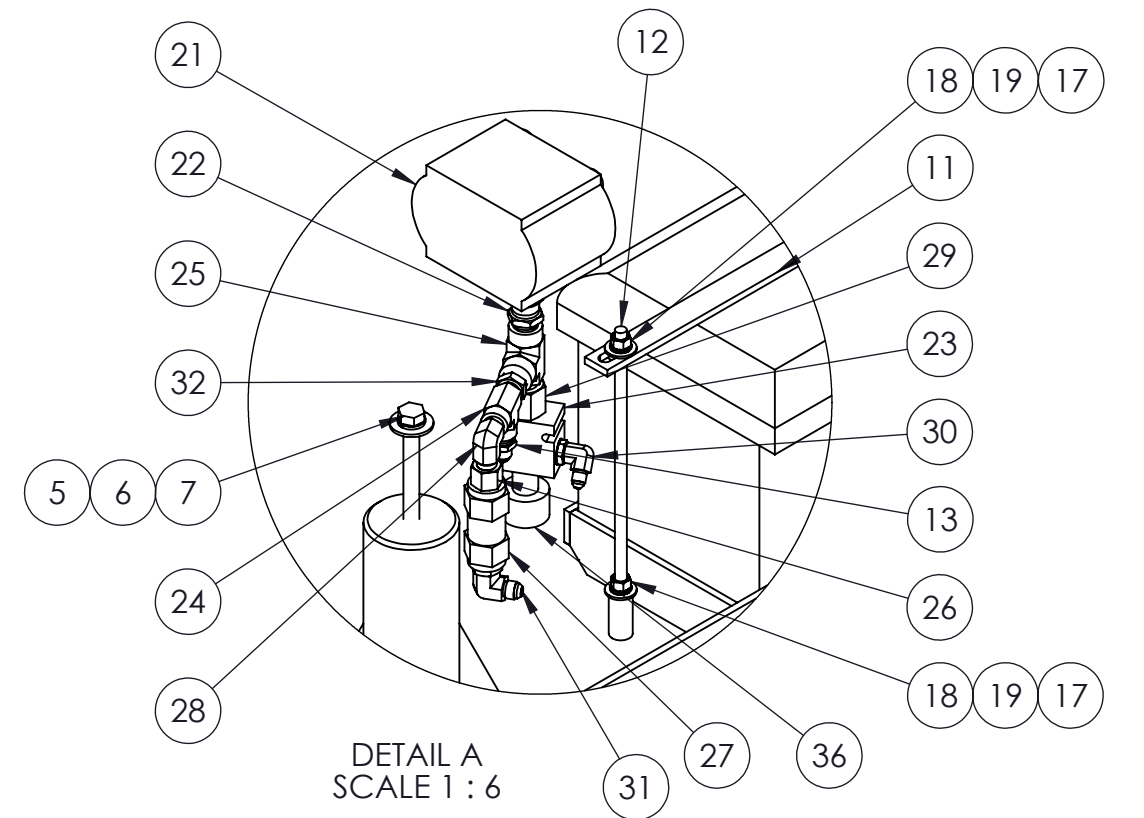
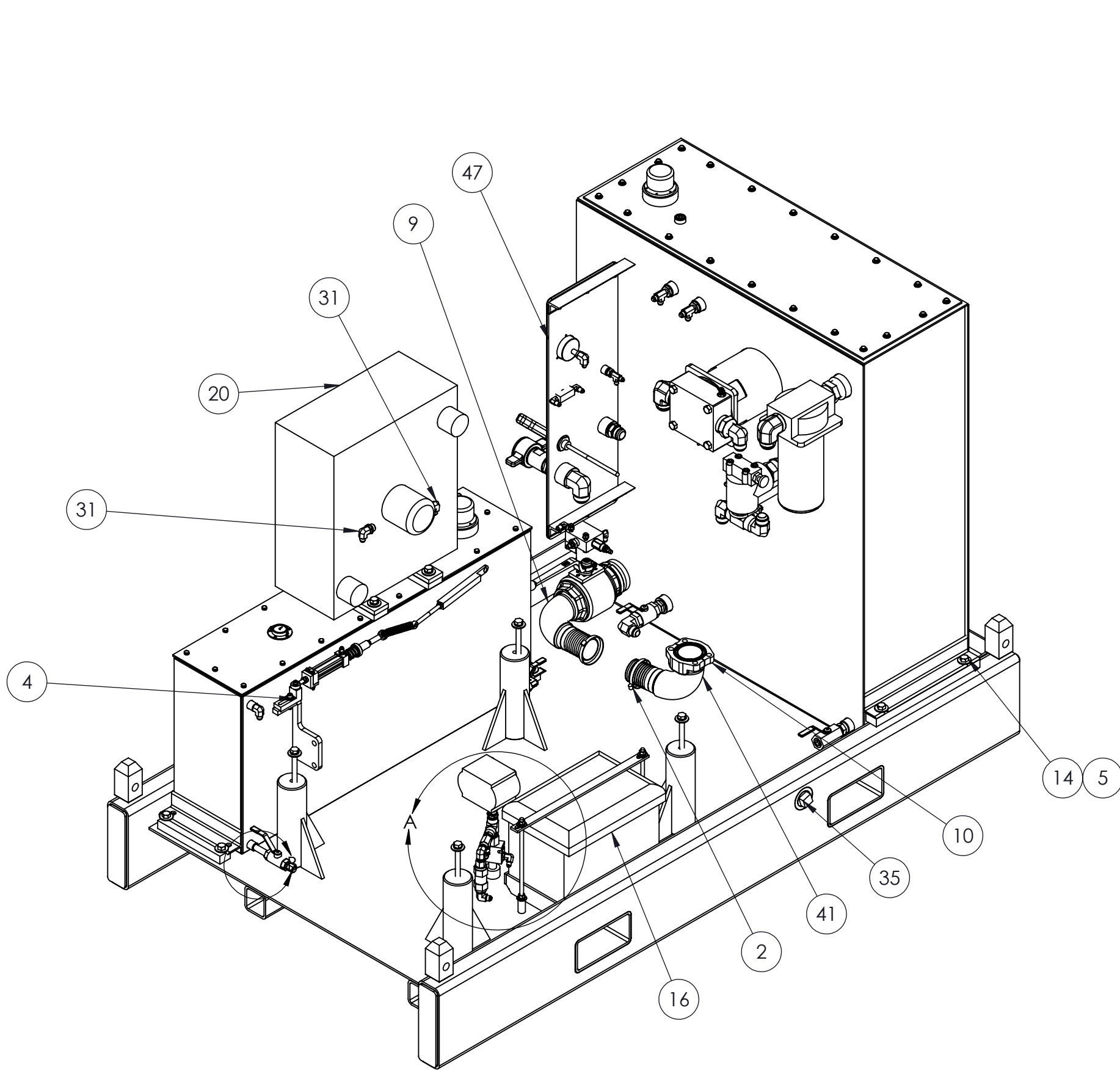
ITEM	QTY	P/N	DESCRIPTION	ITEM	QTY	P/N	DESCRIPTION
1	1	DSKD-12-01	WELDMENT, SKID, 4 CYLINDER, DIESEL POWER UNIT, ELECTRIC START	44	1	1347	FITTING, ELBOW 5/8" MORB X 3/4" MJIC
2	2	D40H-75-300-SL	CLAMP, T-BOLT 2 1/2	45	1	W44-20-20U	FITTING, 1 1/5" CODE 62, 1 1/4" FNPT, STRAIGHT
3	1	D914L04ES	ENGINE, DIESEL, 4 CYLINDER, ELECTRIC START, DEUTZ	46	1	20F5OX-S	FITTING, 1 1/4 MORB, 1 1/4 MJIC, STRAIGHT
4	1	7040HL-011-04	ASSEMBLY, THROTTLE CYLINDER, DIESEL ENGINE, 4 CYLINDER	47	1	7042HL-01	ASSEMBLY, BULKHEAD, DPU
5	16	1102	WASHER, FLAT, 1/2, STEEL, GR08	48	1	DT-35G-01A	ASSEMBLY, TANK, DIESEL, 35 GALLON
6	8	1103	LOCKWASHER, 1/2	49	1	RX-69	FUSE HOLDER, 3AMP, SLOW-BLOW
7	4	1260	SCREW, HEX HEAD, 1/2-13 X 5 1/4, GR8	50	1	RX-68	FUSE, 3A, SLOW-BLOW
8	1	DPU-100-S1	ELBOW, MUFFLER, 6 CYL ENGINE	51	1	1STRAINER	SUCTION STRAINER
9	1	SBE-25HB-25SM-11	FITTING, 2 1/2 HOSE BARB X 2 1/2, CODE 61 FLANGE ADAPTER, 90 DEG	52	1	1371-A	FITTING, 1 MNPT, 1 MNPT, CLOSE, STRAIGHT, SCH 80
10	1	40SFO	FLANGE, SPLIT, 2 1/2", CODE 61	53	2	ASR115-6-5	FUEL HOSE, 3/8 X 5FT
11	1	DPU-102	BATTERY, RETAINER, COVER	54	1	H20-48-FJFJS	HOSE, 1 1/4 X 48 LONG, SINGLE WIRE, FJIC X FJIC
12	2	DPU-101	ROD, ALL THREAD, 3/8"-16	55	1	H20-45-FJFJS	HOSE, 1 1/4, 45 LONG, SINGLE WIRE, FJIC X FJIC
13	1	1570	FITTING, 3/8 MNPT, 3/8 MJIC, STRAIGHT	56	1	H20-60-FJFJ9S	HOSE, 1 1/4, 60 LONG, FJIC X FJIC 90, SINGLE WIRE
14	12	1111	SCREW, HEX, 1/2-13, 1 1/4, STEEL, GR8, ZINC	57	1	AHTT-250	SUCTION HOSE, 2 1/2 X 1.25 FT
15	1	1559	FITTING, ADAPTER, STRAIGHT, 3/8 MJIC, 1/4 MNPT				
16	1	DPU-105	BOX, BATTERY				
17	4	1025	WASHER, FLAT, 3/8, STEEL, GR 8				
18	4	1024	NUT, HEX, 3/8 - 16, STEEL, GR08				
19	4	1027	WASHER, LOCK, 3/8, STEEL				
20	1	PU2500-H21-02	HEAT EXCHANGER, WITH MOTOR				
21	1	DPU660-08-S1	PUMP, HYDRAULIC, COOLER FAN				
22	1	0107-8-8-S	FITTING, STRAIGHT SWIVEL, 1/2 FNPT, 1/2 MNPT				
23	1	DPU660-08-S3	VALVE, BODY, ALUMINUM				
24	1	1595	FITTING, 3/8 FNPT, 3/8 FNPT, 3/8 MNPT, TEE				
25	1	8MRO-S	FITTING, RUN TEE, 1/2 FNPT, 1/2 FNPT				
26	1	8-6F5OG5-S	FITTING, REDUCER BUSHING, 1/2 MORB, 3/8 FNPT				
27	1	DPU660-08-S4	VALVE, CHECK				
28	1	3-8CR-S	FITTING, 3/8 MNPT, ELBOW, 90 DEGREES				
29	1	1727	FITTING, ADAPTER, 7/8 MORB, 1/2 FNPT, STRAIGHT				
30	1	4-6C5OX-S	FITTING, 3/8 MORB, 1/4 MJIC, ELBOW				
31	3	1464-A	FITTING, 1/2 MORB, 3/8 MJIC, ELBOW 1/2 MJIC				
32	1	1491	FITTING, 1/2 MNPT, 3/8 FNPT, STRAIGHT				
33	1	DBSKT-08	HOSE BASKET FRAME, DIESEL POWER UNIT				
34	1	DBSKT-008S1	BASKET, POWER UNIT				
35	2	1612-G	FITTING, PLUG, 1 1/2 NPT				
36	1	DPU660-08-S2	CARTRIDGE, RELIEF				
37	2	202	SCREW, HEX, 5/8-11, 2 1/2, STEEL, GR8				
38	4	195A	WASHER, FLAT, 5/8, GR8				
39	2	1156-A	NUT, NYLOCK, 5/8 - 11				
40	1	PU4060-S20	HYDRAULIC PUMP 60 GPM, 3000 PSI, HP LIM, LS 60 GPM @ <= 1000 PSI				
41	1	BSE-25HB-25S-11	ADAPTER, 2 1/2, 2 1/2, 90				
42	1	HRES-130-01	ASSEMBLY, RESERVOIR, 130 GALLON, HIGH PRESSURE				
43	1	1455	FITTING, 3/8 MODT, 1/4 MJIC, ELBOW				



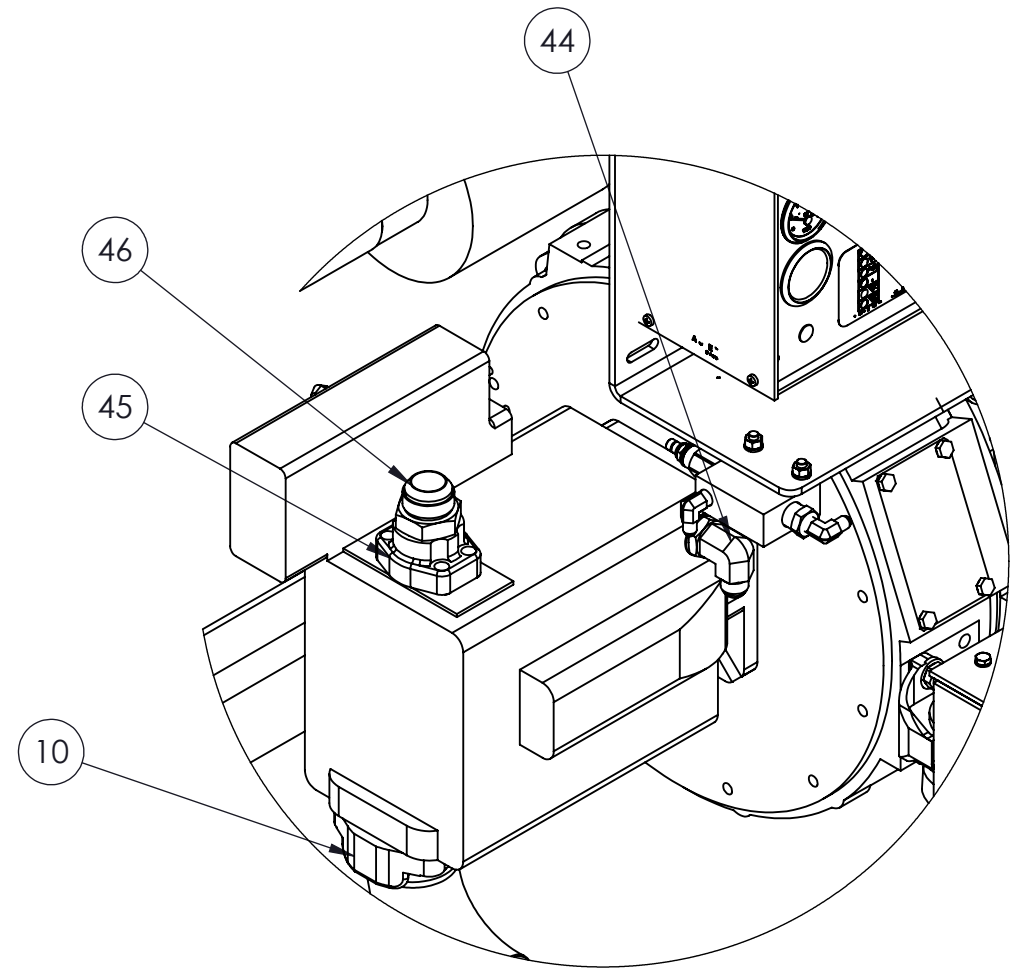
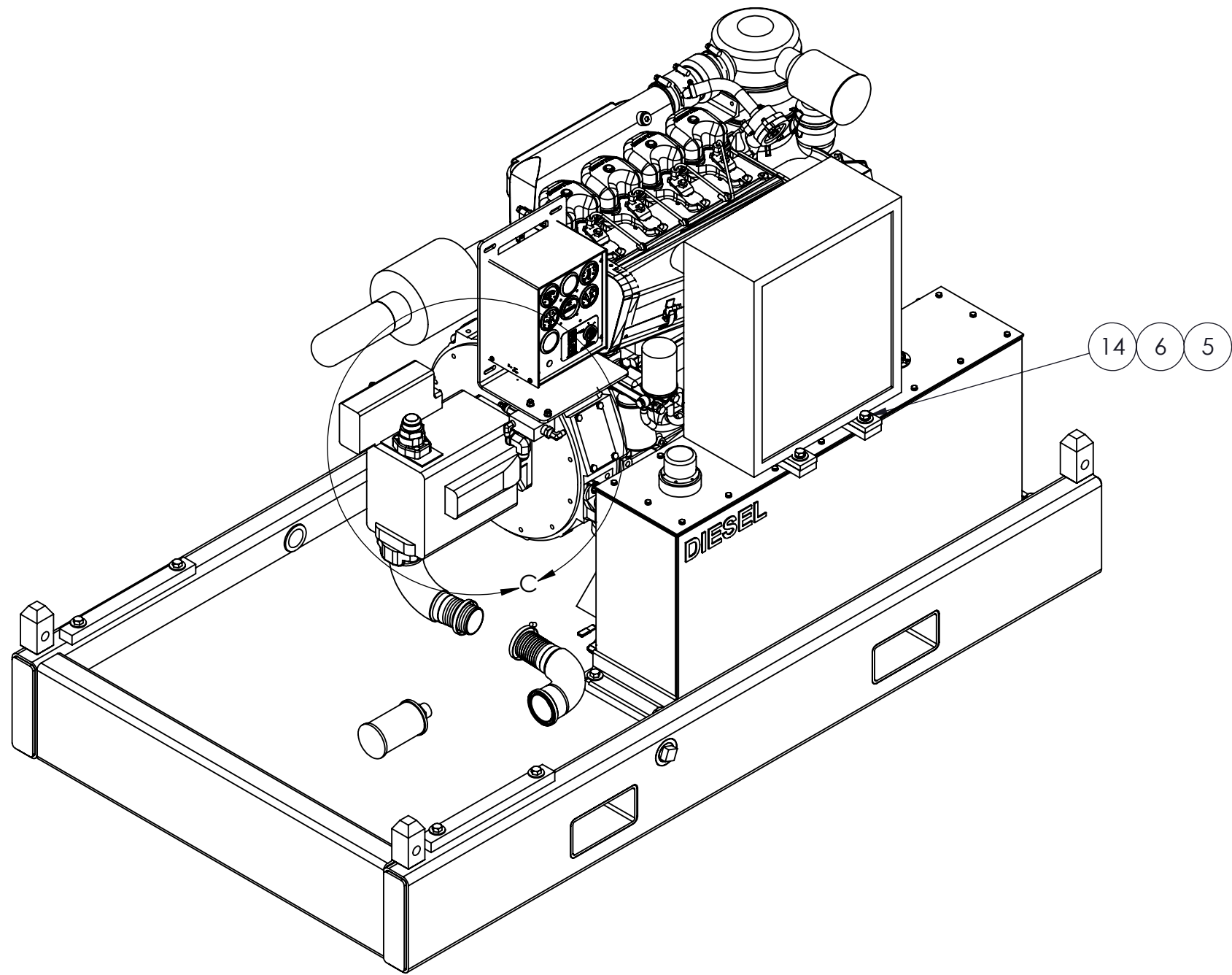
DESCRIPTION			
ASSEMBLY, POWER UNIT, DIESEL, 4 CYLINDER, ELECTRIC START, WITH VARIABLE DISPLACEMENT PUMP, COOLER			
SIZE	PART NO.	REV	
B	DPU440-04	B	
MATERIAL		SHEET 2 OF 5	
N/A			



DESCRIPTION		
	ASSEMBLY, POWER UNIT, DIESEL, 4 CYLINDER, ELECTRIC START, WITH VARIABLE DISPLACEMENT PUMP, COOLER	
SIZE	PART NO.	REV
B	DPU440-04	B
MATERIAL	N/A	SHEET 3 OF 5



DESCRIPTION		
ASSEMBLY, POWER UNIT, DIESEL, 4 CYLINDER, ELECTRIC START, WITH VARIABLE DISPLACEMENT PUMP, COOLER		
SIZE	PART NO.	REV
B	DPU440-04	B
MATERIAL	N/A	SHEET 4 OF 5



DETAIL C
SCALE 1 : 6

DESCRIPTION		
ASSEMBLY, POWER UNIT, DIESEL, 4 CYLINDER, ELECTRIC START, WITH VARIABLE DISPLACEMENT PUMP, COOLER		
SIZE	PART NO.	REV
B	DPU440-04	B
MATERIAL	N/A	SHEET 5 OF 5