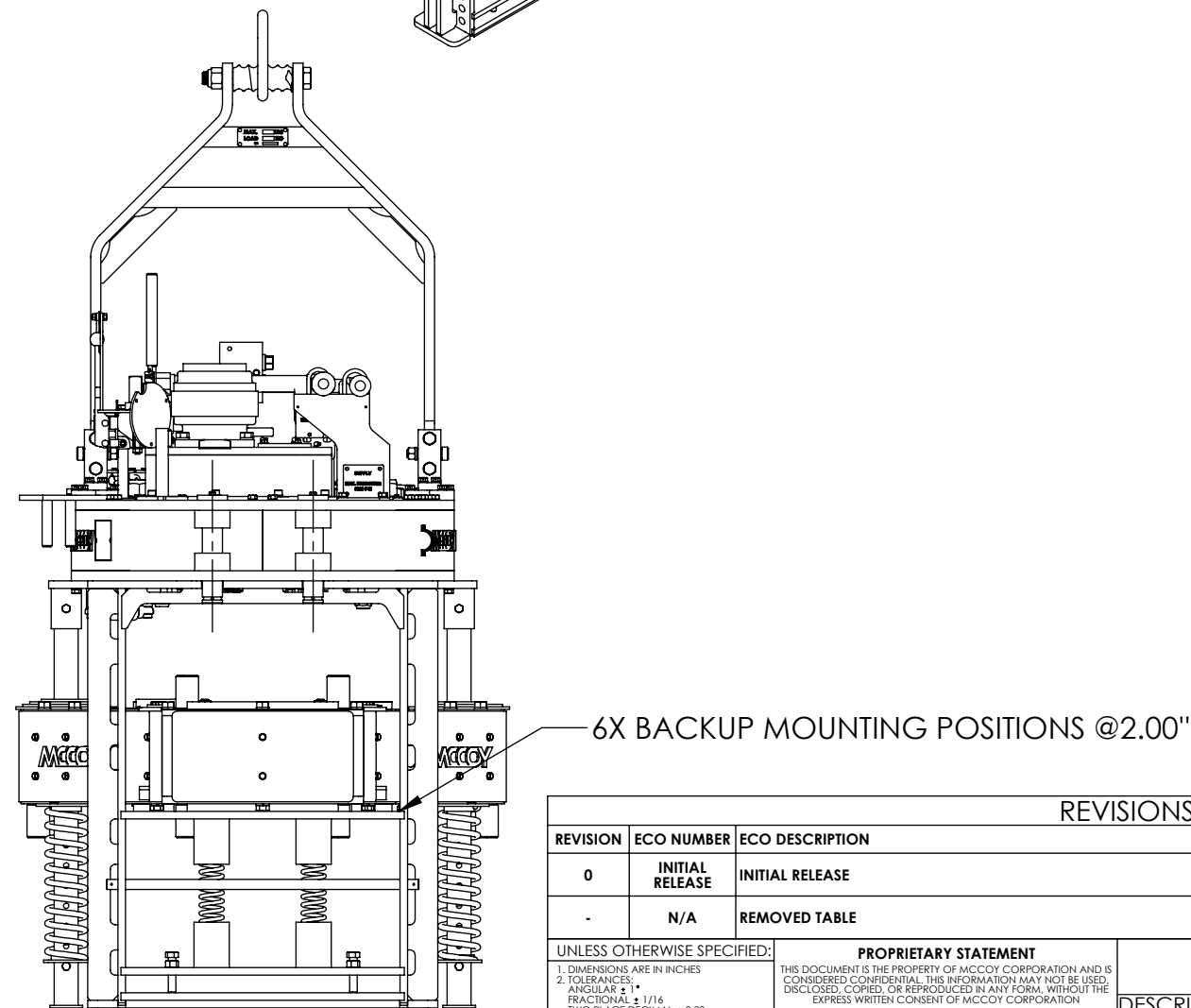
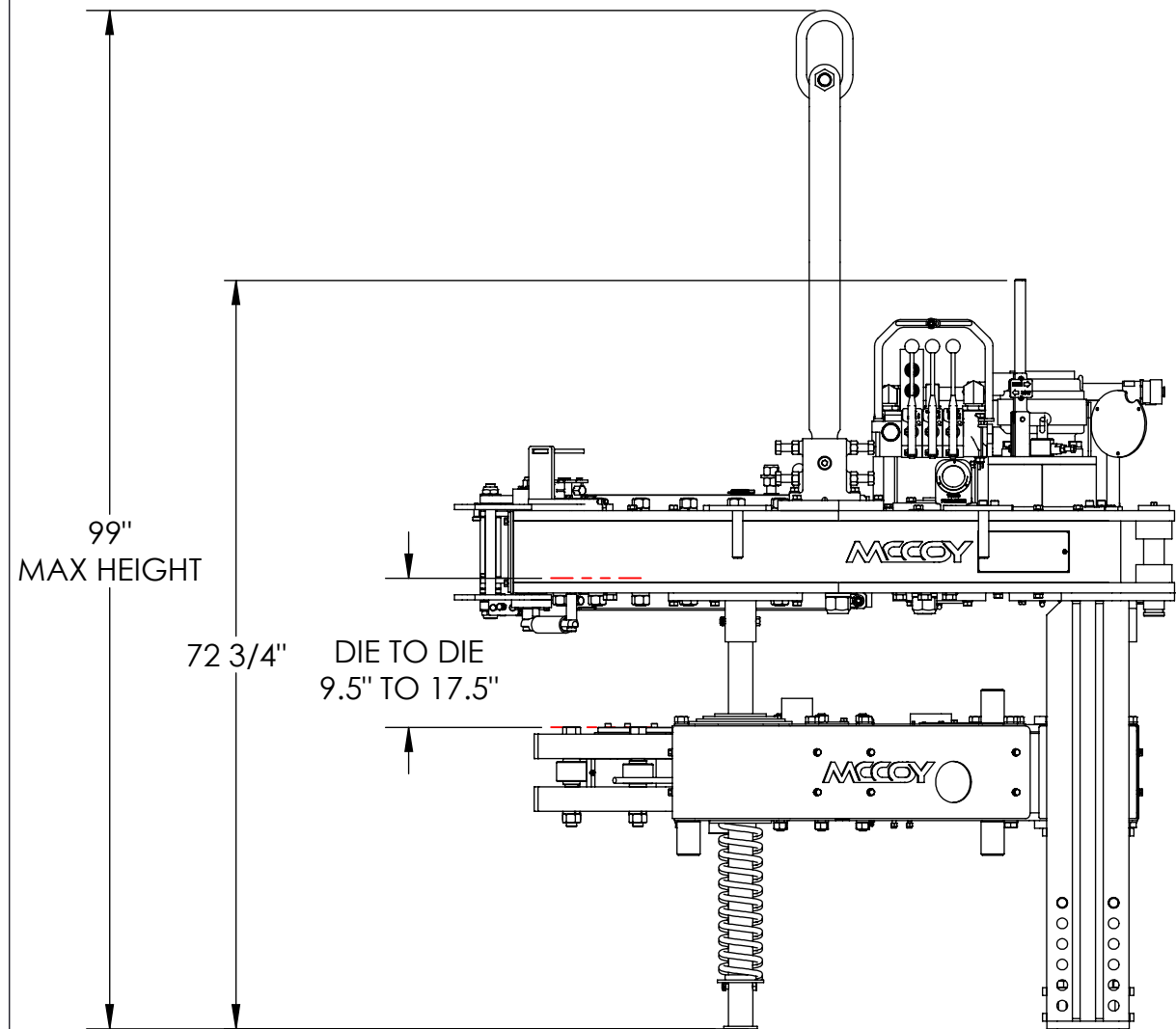


ITEM	QTY	P/N	DESCRIPTION
1	1	MK1475-1	MOUNTING KIT, 14375-75K X 15000 LJ BU, COMPRESSION
2	1	80-1001-11	ASSEMBLY, BU READY TONG, 14375-75K
3	1	85-1003	ASSEMBLY, BACKUP, 15000 LOCKJAW, COMPRESSION

TONG SPECIFICATION		
MAX TORQUE (FT · LBS/N · M)	75,000	101,700
ARM LENGTH (INCH/CM)	38.8	98.6
MASS (LBS/KG)	5,900	2,679
TORQUE (FT · LBS/N · M, ESTIMATED)		
AT PRESSURE (PSI/BAR):	2,450	169
Hi/Full	13,863	18,798
Lo/Full	75,000	101,700
SPEED (RPM, ESTIMATED)		
AT FLOW RATE (GPM/LPM):	60	227
Hi/Full	23.8	
Lo/Full	4.4	



REVISIONS				
REVISION	ECO NUMBER	ECO DESCRIPTION	ECO COMPLETED BY	ECO COMPLETED DATE
0	INITIAL RELEASE	INITIAL RELEASE	INITIAL RELEASE	INITIAL RELEASE
-	N/A	REMOVED TABLE	R. HENRY	1/19/2018

UNLESS OTHERWISE SPECIFIED:		PROPRIETARY STATEMENT		DESCRIPTION	
1. DIMENSIONS ARE IN INCHES	THIS DOCUMENT IS THE PROPERTY OF MCCOY CORPORATION AND IS CONSIDERED CONFIDENTIAL. THIS INFORMATION MAY NOT BE USED, DISCLOSED, COPIED, OR REPRODUCED IN ANY FORM, WITHOUT THE EXPRESS WRITTEN CONSENT OF MCCOY CORPORATION.				
2. TOLERANCES: ANGULAR ± .1° FRACTIONAL ± 1/16 TWO PLACE DECIMAL ± 0.02 THREE PLACE DECIMAL ± 0.005					
3. IDENTIFY P/N & MAIL P.O. USING 1/8 TO 1/4 ETCHED LETTERS, DENOTED BY "X"		DRAWN	R.RAJUR	05/27/2014	ASSEMBLY, TONG, 14375-75K X 15000 LJ BU, COMPRESSION
4. REMOVE BURRS & SHARP EDGES WITH 1/64x45° MAX		CHECKED	B. MA	05/27/2014	SIZE PART NO.
5. MACHINED FILET RADII SHALL BE 1/32		APPROVED	B.MA	05/27/2014	B
6. FINAL SURFACE ROUGHNESS AVG. (Ra) SHALL BE ≤ 250 MICROINCHES		THIRD ANGLE PROJECTION			80-1001-23
7. SHALL BE ≤ 250 MICROINCHES		WEIGHT			REV 0
8. A TRIANGLE DENOTES A REVISION		5746.98 LBS.			MATERIAL
9. INTERPRET DRAWING PER ASME Y14.5-2009					N/A

UNDER REVISION