

LMC BRIDGE CRANE

CONTROLLER AND I/O DEVICE

FOR APPLICATIONS NOT REQUIRING AN INTEGRATED DISPLAY, THE LMC DELIVERS IMPRESSIVE FEATURES AT AN AGGRESSIVE PRICE POINT.

THE LMC SIMULTANEOUSLY MONITORS 2 HOISTS (MAIN AND AUXILIARY) WITH UP TO 4 LOAD SENSORS PER HOIST; AN INDEPENDENT 8-POINT CALIBRATION EQUATION IS APPLIED TO EACH HOIST.

LMC CAN OPERATE AS A STANDALONE CONTROLLER OR BE DEPLOYED AS A REMOTE I/O DEVICE WITHIN AN MCCOY GLOBAL SYSTEM NETWORK.



STANDARD CONFIGURATION

MGNet (Digital Network)

- Up to (12) devices
- Up to 300 meters

RS485 Port

- Up to (3) scoreboards (main, aux and total)
- User-configurable ASCII output strings
- Up to 300 meters
- 9600 baud; 8 data bits; no parity; 1 stop bit

Onboard Wireless Antenna

- Monitors one wireless device
- Up to 300 meters (line of sight)

USB Port

- System setup via included configuration software
- System diagnostics via included inspection software

(4) Input Coil-Type Relays

- Select from 12 or 24 VDC or 120 VAC
- Controls tare, shunt calibration

(4) Output Relays

- Option to expand to (12)
- Dry contact; NO and NC contacts
- 30 VDC/240 VAC at 10 amps

(2) 4-20 mA Analog Inputs

- 2 Hz sampling rate
- Supports shunt calibration

(1) 4-20 mA Analog Output

- 12 to 24 VDC

(12) Individual Relay Set Points

- Balance Alarms
- Communications Alarms
- Overload Protection Alarms

Electrical Specifications

Supply Voltage: 12 or 24 VDC (nominal)
Supply Current: 500 mA (max)

Environmental

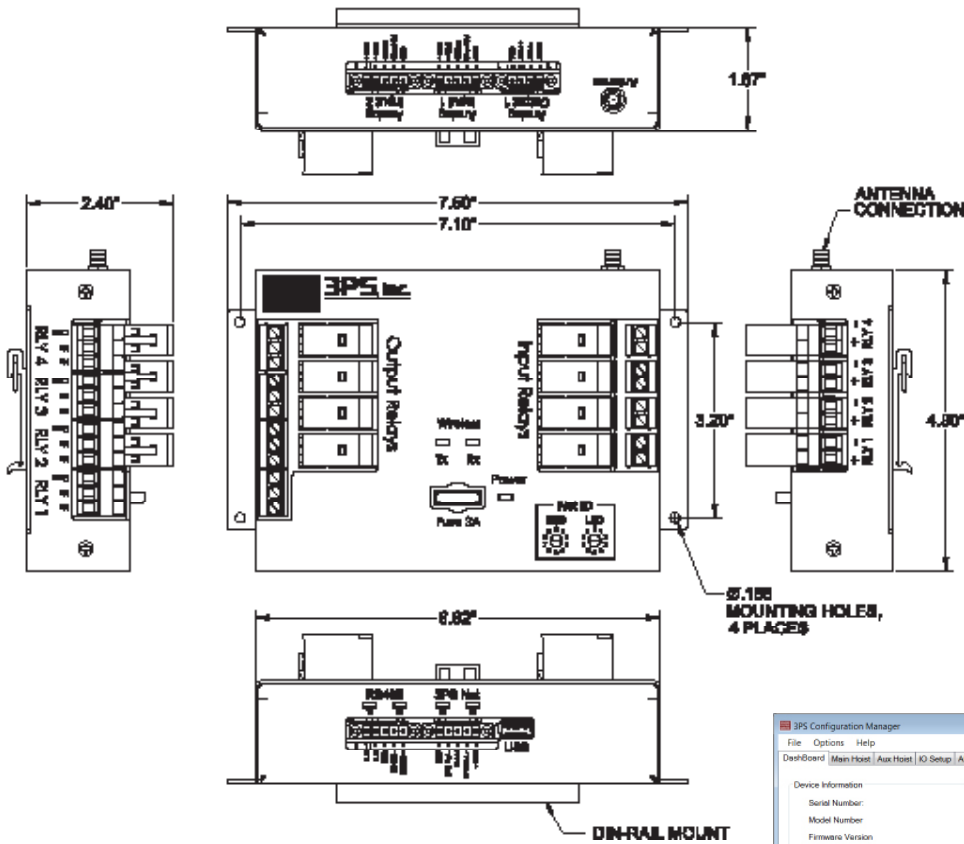
Operating Temperature: -40 to 158°F (-40 to 70°C)
Storage Temperature: -40 to 158°F (-40 to 85°C)

Dimensions

Height: 4.90 in (12.45 cm)
Width: 6.62 in (16.81 cm)
Depth: 2.40 in (6.1 cm)
Weight: <5 lbs (< 2.27 kg)
Includes Din Rail Mount Bracket

LMC BRIDGE CRANE

CONTROLLER AND I/O DEVICE



ORDERING PART NUMBER

LMC-0001-012

12 VDC supply
30 VDC/240 VAC @ 10 amp Contacts
Inputs Coils @ 12 VDC

LMC-0001-024

24 VDC supply
30 VDC/240 VAC @ 10 amp Contacts
Inputs Coils @ 24 VDC

LMC-0001-120

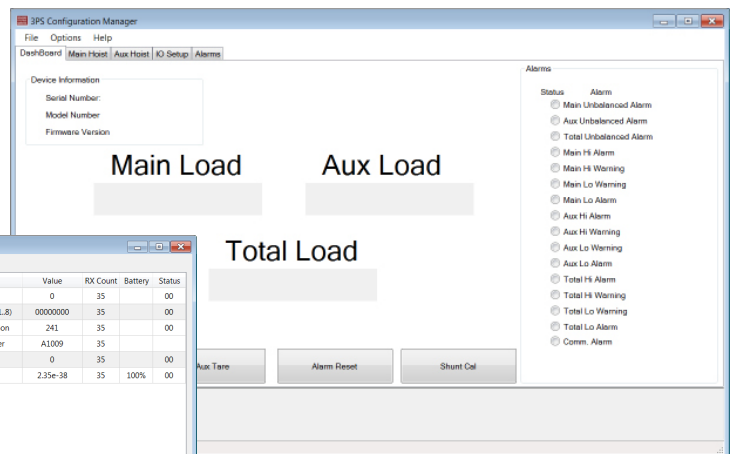
24 VDC supply
30 VDC/240 VAC @ 10 amp Contacts
Inputs Coils @ 120 VAC

SOFTWARE CONFIGURATION

LMC Configuration Manager provides a fast and easy USB interface for communications.

3PSNet Inspector v1.06
Detected Device: A1350901: LMC-0001

CAN ID	Device Type	Field	Value	RX Count	Battery	Status
3	4-20mA Current	Current	0	35		00
256	Switch Input	Switch States (1..8)	00000000	35		00
512	Relay Output	Firmware Version	241	35		00
		Serial Number	A1009	35		00
1024	4-20mA Current	Current	0	35		00
1536	RF Load	Load	2.35e-38	35	100%	00



WWW.MCCOYGLOBAL.COM